

**GENERAL**

The Caproco standard high pressure access fitting provides access to systems under full operating conditions (up to 6,000 psi / 41.4 Mpa), eliminating any need for system shut-down in order to obtain vital corrosion data. Certain models are rated up to 10,000 psi / 68.9 Mpa.

This versatile fitting comes in different mounting configurations, allowing operators the flexibility to select the optimum location based on the type of monitoring desired and any location-specific characteristics (such as height clearance) that need to be taken into consideration.

**APPLICATION**

Once the fitting is attached to the line, it acts as the conduit through which hot tapping and swabbing can take place. After the line is successfully "tapped in", monitoring equipment can be exposed to the process stream by using the Caproco Retriever and Service Valve to install either a Solid or Hollow plug, to which monitoring equipment can be attached. Once installed, the plug seals off the fitting, thereby maintaining line integrity.

The Caproco access fitting is available in seven main body shapes:

- Flareweld
- Buttweld
- Socketweld
- NPT Threaded
- Flanged
- "L" Trap (Single)
- Cross Trap (Double)

Fittings can be located anywhere on-line that local operating conditions permit. Trap fittings are typically mounted underneath the line and gather samples of the liquids and residues that exist along the line bottom. Monitoring through traps simulates the corrosive conditions of stagnant locations that may exist in the line.

**SPECIFICATIONS**

The Buttweld, Socketweld, Flareweld and NPT Access fitting bodies are manufactured from 1020 hot rolled bar stock or from A350LF2/A105N forged bar. Flange fittings are manufactured from long weldneck forgings. Alternative materials and sizes are available upon request.

All welds are stress relieved and inspected according to prevailing relevant codes.



FLAREWELD



BUTTWELD



SOCKETWELD



THREADED



FLANGE

**TABLE 1 - STANDARD ACCESS FITTING ASSEMBLIES (NON-TEE) FOR SERVICE ABOVE -20 °F (-28.9 °C)**

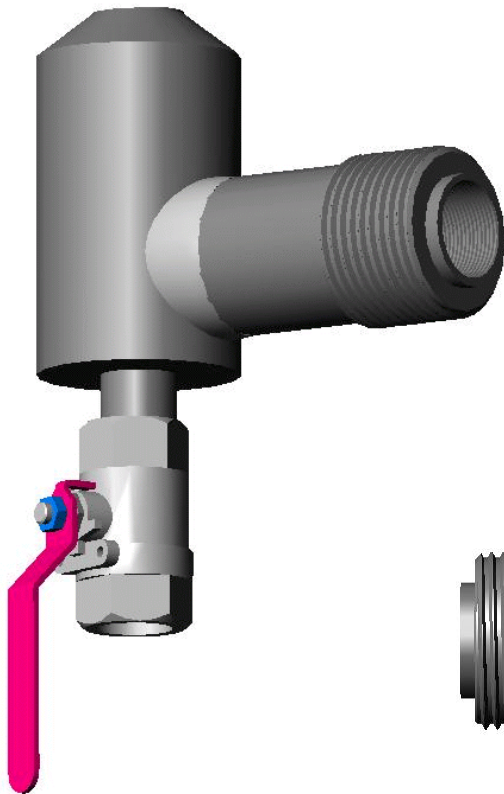
Body Style / Line Size	Part No.	Material	Height		Weight		Max. Working Pressure	
			(in)	(mm)	(lb)	(kg)	(psi)	(MPa)
<b>Flareweld</b>								
2x2	12910	AISI-1020	5.25	133	5.5	2.5	6000	41.36
3x2	12911	AISI-1020	5.25	133	5.5	2.5	6000	41.36
4x2	12912	AISI-1020	5.25	133	5.5	2.5	6000	41.36
6x2	12913	AISI-1020	5.25	133	5.5	2.5	6000	41.36
10-8x2	12914	AISI-1020	5.25	133	5.5	2.5	6000	41.36
18-12x2	12915	AISI-1020	5.25	133	5.5	2.5	6000	41.36
36-20x2	12916	AISI-1020	5.25	133	5.5	2.5	6000	41.36
Flatx2	12917	AISI-1020	5.25	133	5.5	2.5	6000	41.36
<b>Buttweld Flat</b>	12918	AISI-1020	5.25	133	5.0	2.3	6000	41.36
<b>Socketweld</b>	12919	AISI-1020	4.875**	124**	5.0	2.3	3600/ 6000 †	20.68/ 41.36 †
<b>NPT</b>	12920	AISI-1020	5.00**	127**	5.0	2.3	3600/ 6000 †	20.68/ 41.36 †

Table 1 Permissible, but not recommended for prolonged usage above 650 °F, 340 °C

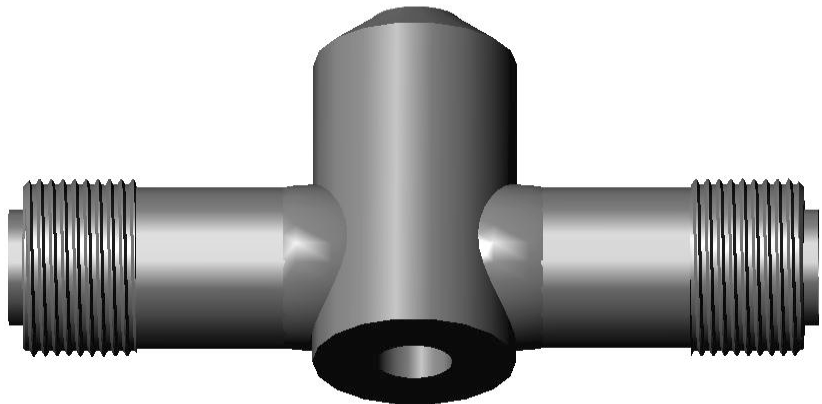
**Table Legend**

- \* For Water, Oil, Gas at 200 °F (93 °C)
- \*\* Height for fitting body only

† Pressure rating for socket weld and NPT fittings are rated to that of the weld-o-let or thread-o-let; either 3000# or 6000#



**“L” Trap**



**Double Liquid or “Cross” Trap**

**ACCESS FITTING BODY ~ NON TEE**

**TABLE 2 - LOW TEMPERATURE ACCESS FITTING ASSEMBLIES (NON-TEE) FOR SERVICE BELOW -20 °F (-28.9 °C)**

Body Style / Line Size	Part No.	Material	Height		Weight		Max. Working Pressure	
			(in)	(mm)	(lb)	(kg)	(psi)	(MPa)
<b>Flareweld</b>								
2x2	12934	ASTM-A350LF2/A105N	5.25	133	5.5	2.5	6000	41.36
3x2	12935	ASTM-A350LF2/A105N	5.25	133	5.5	2.5	6000	41.36
4x2	12936	ASTM-A350LF2/A105N	5.25	133	5.5	2.5	6000	41.36
6x2	12937	ASTM-A350LF2/A105N	5.25	133	5.5	2.5	6000	41.36
10-8x2	12938	ASTM-A350LF2/A105N	5.25	133	5.5	2.5	6000	41.36
18-12x2	12939	ASTM-A350LF2/A105N	5.25	133	5.5	2.5	6000	41.36
36-20x2	12940	ASTM-A350LF2/A105N	5.25	133	5.5	2.5	6000	41.36
Flatx2	12941	ASTM-A350LF2/A105N	5.25	133	5.5	2.5	6000	41.36
<b>Buttweld Flat</b>	12942	ASTM-A350LF2/A105N	5.25	133	5.0	2.3	6000	41.36
<b>Socketweld</b>	12943	ASTM-A350LF2/A105N	4.875**	124**	5.0	2.3	3600/ 6000 †	20.68/ 41.36 †
<b>NPT</b>	12944	ASTM-A350LF2/A105N	5.00**	127**	5.0	2.3	3600/ 6000 †	20.68/ 41.36 †
<b>Flanged (ANSI)</b>								
2 " 150 # R.F.	12945	ASTM-A350LF2/A105N	5.25	133	11	5.0	260*	1.79*
2 " 300 # R.F.	12946	ASTM-A350LF2/A105N	5.25	133	13	5.9	675*	4.65*
2 " 4 / 600 # R.F.	12947	ASTM-A350LF2/A105N	6.25	159	17	7.7	900 / 1350*	6.20 / 9.31*
2 " 9 / 1500 # R.F.	12948	ASTM-A350LF2/A105N	6.25	159	31	14.0	2025 / 3375*	13.96/ 23.27*
2 " 2500 # R.F.	12949	ASTM-A350LF2/A105N	6.25	159	44	20.0	5625*	38.78*
2 " 150 # R.J.	12950	ASTM-A350LF2/A105N	5.25	133	11	5.0	260*	1.79*
2 " 300 # R.J.	12951	ASTM-A350LF2/A105N	5.25	133	13	5.9	675*	4.65*
2 " 4 / 600 # R.J.	12952	ASTM-A350LF2/A105N	6.25	159	17	7.7	900 / 1350*	6.20 / 9.31*
2 " 9 / 1500 # R.J.	12953	ASTM-A350LF2/A105N	6.25	159	31	14.0	2025 / 3375*	13.96/ 23.27*
2 " 2500 # R.J.	12954	ASTM-A350LF2/A105N	6.25	159	44	20.0	5625*	38.78*
<b>Flanged (API)</b>								
2 " 2000 # R.J.	12955	AISI-4130	6.25	159	17	7.7	2000	13.79
2 " 3 / 5000 # R.J.	12956	AISI-4130	6.25	159	31	14.0	3000 / 5000	20.68 / 34.47
2 " 10000 # R.J.	12957	AISI-4130	6.25	159	31	14.0	10000	68.94

Table 2 Not to be used above 650 °F, 340 °C

**Table Legend**

- \* For Water, Oil, Gas at 200 °F (93 °C)
- \*\* Height for fitting body only
- † Pressure rating for socket weld and NPT fittings are rated to that of the weld-o-let or thread-o-let; either 3000# or 6000#

**Height of Socketweld / NPT Fitting Assembled With Sock-o-let / Thread-o-let**

	3000 #		6000 #	
Socketweld	5.75 "	146 mm	6.13 "	156 mm
NPT	5.80 "	147 mm	6.37 "	162 mm