

### GENERAL

Caproco offers a range of protective covers designed to protect the exposed threads on access fittings from mechanical damage, dust, dirt and moisture.

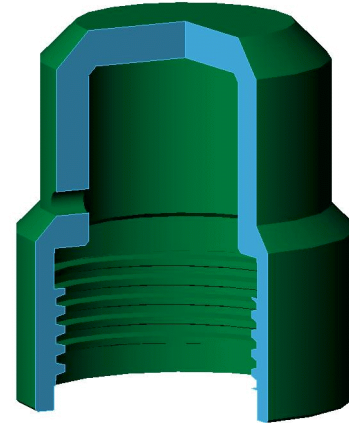
Several types of covers are available: Heavy Duty, Heavy Duty Pressure Containing and Dust. Within these categories are a variety of design options to satisfy any field application.

### HEAVY DUTY COVER

The heavy duty cover is threaded internally to mate with the access fitting body. The heavy construction of the cover provides protection from mechanical damage to the access fitting Acme threads. Heavy duty covers are available in both steel and molded glass-filled neoprene. The glass-filled neoprene cover withstands extreme atmospheric conditions, is resistant to all hydrocarbons, has a coefficient of expansion similar to steel, and has an operating temperature range from -40 °F (-40 °C) to 250 °F (121 °C).



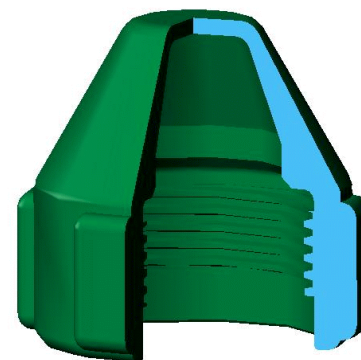
**Heavy Duty Steel Pressure Cover with Bleed Valve**



**Heavy Duty Steel Cover (without hole)**

### HEAVY DUTY PRESSURE CONTAINING COVER

Pressure-containing covers come equipped with a bleed valve and/or pressure gauge. They are designed as a secondary safety containment in the event that a seal in the fitting should develop a leak. The gauge indicates the presence of any pressure build-up, which the valve can be used to purge prior to removing the cover.



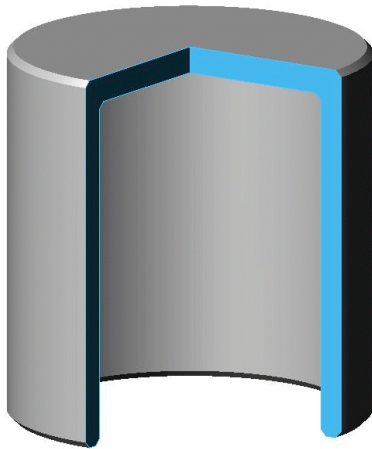
**Heavy Duty Neoprene Cover (without hole)**

### DUST COVER

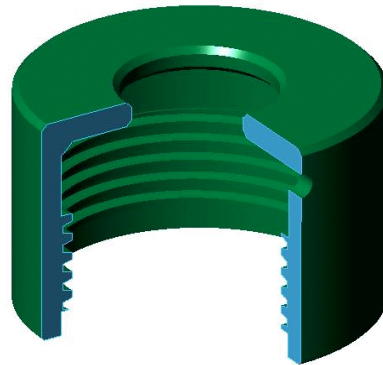
Dust covers are available in both aluminum and stainless steel. These covers slip over the Acme threads and protect the access fitting from dust and dirt. The stainless steel cover provides more protection from mechanical damage than the aluminum cover.

## PROTECTIVE COVERS

| DESCRIPTION                                  | PART NUMBER | MATERIAL              | HEIGHT             | DIA               | WEIGHT                  |
|--|-------------|-----------------------|--------------------|-------------------|-------------------------|
| Heavy Duty Protective Cover Without Hole     | 10598       | 1020 CS               | 3.75 "<br>(95 mm)  | 3.5 "<br>(89 mm)  | 3 lb 11 oz.<br>(1672 g) |
| Heavy Duty Protective Cover With Hole        | 10599       | 1020 CS               | 2.25 "<br>(57 mm)  | 3.5 "<br>(89 mm)  | 2 lb 2 oz.<br>(964 g)   |
| Heavy Duty Protective Cover With Bleed Valve | 10600       | 1020 CS               | 5.00 "<br>(127 mm) | 3.5 "<br>(89 mm)  | 9 lb 3 oz.<br>(4190 g)  |
| Stainless Steel Dust Cover Without Hole      | 10601       | 316 SS                | 3.75 "<br>(95 mm)  | 3.25 "<br>(83 mm) | 5 oz.<br>(142 g)        |
| Stainless Steel Dust Cover With Hole         | 10606       | 316 SS                | 3.75 "<br>(95 mm)  | 3.25 "<br>(83 mm) | 4.5 oz.<br>(128 g)      |
| Aluminum Dust Cover Without Hole             | 10603       | Aluminum              | 3.75 "<br>(95 mm)  | 3.25 "<br>(83 mm) | 2.8 oz.<br>(79 g)       |
| Aluminum Dust Cover With Hole                | 10604       | Aluminum              | 3.75 "<br>(95 mm)  | 3.25 "<br>(83 mm) | 2.7 oz.<br>(77 g)       |
| Heavy Duty Protective Cover Without Hole     | 10602       | Glass-Filled Neoprene | 4.00 "<br>(102 mm) | 3.75 "<br>(95 mm) | 10 oz.<br>(284 g)       |
| Heavy Duty Protective Cover Without Hole     | 11687       | Glass-Filled Neoprene | 2.25 "<br>(57 mm)  | 3.75 "<br>(95 mm) | 7 oz.<br>(198 g)        |
| Heavy Duty Protective Cover Without Hole     | 21024       | 316 SS                | 3.75 "<br>(95 mm)  | 3.5 "<br>(89 mm)  | 3 lb 11 oz.<br>(1672 g) |
| Heavy Duty Protective Cover With Hole        | 21043       | 316 SS                | 2.25 "<br>(57 mm)  | 3.5 "<br>(89 mm)  | 2 lb 2 oz.<br>(964 g)   |



**Dust Cover  
(with/without hole)  
Stainless Steel or Aluminum**



**Heavy Duty Cover  
(with hole)  
Steel or Neoprene**