

## GENERAL

The multiple disc coupon holder assembly offers the same advantages as standard disc coupon holders, with the added advantage of multiphase monitoring. Multiphase monitoring becomes important in a system where line conditions may promote non-uniform corrosion rates.

Multidisc coupon holders can be used to monitor a variety of locations, such as:

1. Top of line dead gas trap
2. Flush with pipe wall
3. Top of line
4. Middle of line
5. Bottom of line
6. Bottom of line - dead liquid trap
7. Special position requirements

Combinations of any of the above positions may be ordered to suit a particular situation.

## APPLICATION

With the use of the Caproco access fitting, retriever and service valve, the disc coupon holder allows for easy, rapid changing of coupons without system shutdown.

Multiple disc coupon holders are supplied complete with Viton O-rings and Delrin spacers. The O-ring insulates the coupon from the holder and the spacers insulate the coupons from each other while providing the correct orientation of the coupon in the line.

## SPECIFICATIONS

Caproco disc coupon holders are manufactured from 316 stainless steel.

Maximum Operating Pressure	3,600 psi (24.8 MPa)
Maximum Operating Temperature	500°F (260°C)

Holder of any length or material available on request. Multiple disc coupon holders are designed to be mounted on a Caproco solid plug through a 2" access fitting.

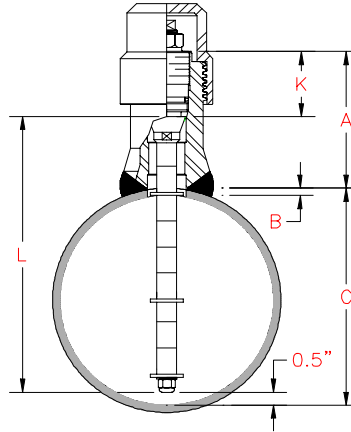


**ORDERING INFORMATION**

1. Access fitting height (distance from top of access fitting - cover off, to line O.D.)
2. Nominal pipe size
3. Pipe wall thickness
3. Length of bottom of line liquid trap, if applicable
5. Desired positions of coupons

**Key:**

- A** = Access Fitting Height [distance from top of access fitting (cover off) to line O.D.]
- B** = Pipe Wall Thickness
- K** = Constant (plug height: 2.5" / 63.5mm)
- C** = Pipe - inside diameter
- L** = Length of Holder Required



**BOTTOM OF LINE**  
 $L = A + B + C - [K + \frac{1}{2}"]$

**MULTIPLE DISC COUPON HOLDERS**

LENGTH		PART NUMBER	LENGTH		PART NUMBER
INCHES	MM		INCHES	MM	
7.00	178	12358	11.75	298	12377
7.25	184	12359	12.00	305	12378
7.50	191	12360	12.25	311	12379
7.75	197	12361	12.50	318	12380
8.00	203	12362	12.75	324	12381
8.25	210	12363	13.00	330	12382
8.50	217	12364	13.25	337	12383
8.75	222	12365	13.50	343	12384
9.00	229	12366	13.75	349	12385
9.25	235	12367	14.00	356	12386
9.50	241	12368	14.25	362	12387
9.75	248	12369	14.50	368	12388
10.00	254	12370	14.75	375	12389
10.25	260	12371	15.00	381	12390
10.50	267	12372	15.25	387	12391
10.75	273	12373	15.50	394	12392
11.00	279	12374	15.75	400	12393
11.25	286	12375	16.00	406	12394
11.50	292	12376	16.25	413	12395