

### GENERAL

The Caproco fixed injection/sampling system consists of a bull plug access fitting assembly through which an injection tube or quill is inserted. Where applicable, a nozzle may be fitted to the tube for injection purposes. Injection/sampling is done through a shut off valve at the end of the tube/quill. An optional check valve is available to ensure that the fluid in the system does not back flow to the injection equipment if for any reason the pressure in the injection system falls below the line pressure.

### INJECTION/SAMPLING ASSEMBLY

The standard Caproco fixed injection or sampling assembly is comprised of the following components:

- Bull Plug
- Injection Tube / Sampling Tube
- Injection Nozzle (if applicable)
- Shut Off Valve
- Check Valve (optional)
- Feed Pump and an Injection Liquid Tank (usually customer supplied)

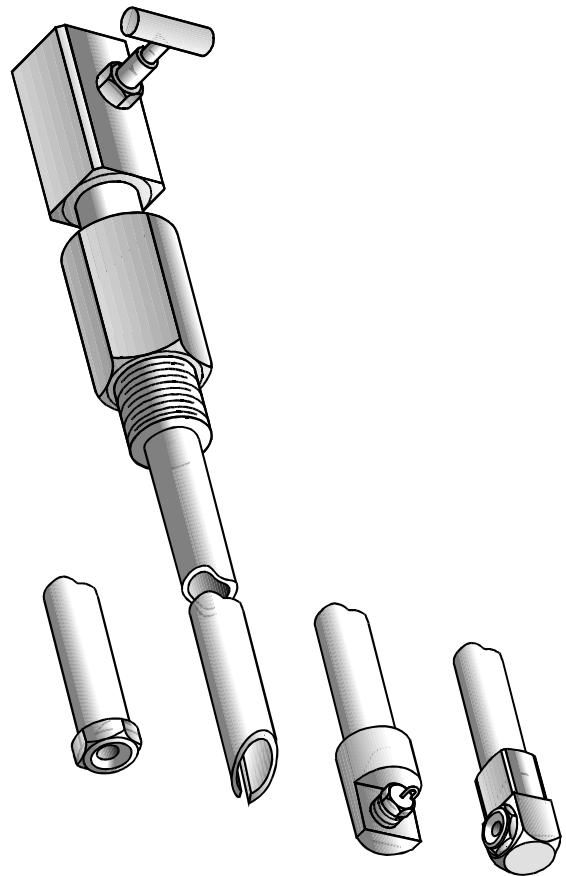
### SPECIFICATIONS

Maximum Operating Pressure	3,600 / 6,000 psi (24.8 / 41.4 MPa)
Maximum Operating Temperature	500 °F (260 °C)

The bull plug, tube/quill, nozzle and valve are all manufactured from stainless steel. Other materials/designs are available to meet the specifications of virtually any application. The tube/quill is manufactured with an integrated blow-out-preventor as an additional safeguard.

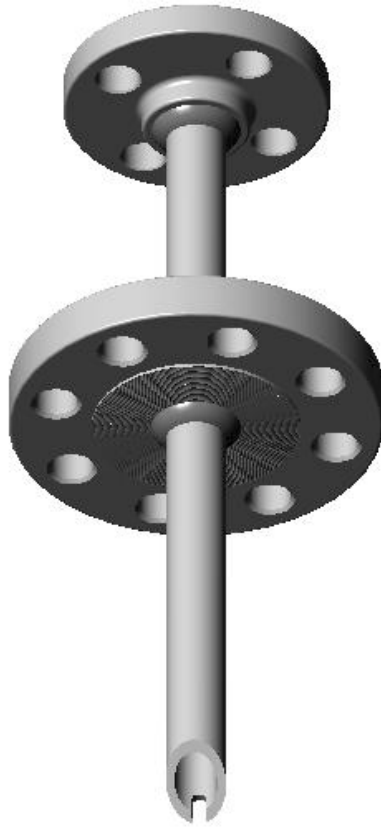
Caproco fixed assemblies are designed for mounting through a standard thread-o-let fitting, available in 1/2", 3/4", 1" 1 1/2" and 2" NPT configurations. Valves are available in 1/4" and 1/2" inlet sizes.

The fixed style injection/sampling system must be used in locations which can be depressurized for insertion and removal. However, sampling and injection can take place under full operating conditions.



SEE *INJECTION/SAMPLING SYSTEMS ~ RETRIEVABLE* CATALOG SHEET FOR SIZING OPTIONS AND PART NUMBERS FOR:

- TUBE LENGTH AND STYLES (TABLE 3)
- NOZZLE SPECIFICATIONS (TABLES 4,5)



**FLANGED INJECTION QUILL**